



# DREAM COLOR CARD

FRAMISITALIA  


## COLOUR CODES | CODICI COLORE

CODE	COLOUR	PANTONE REF. TP-TPX
0002	TRANSPARENT	n.a.
0003	SHINY TRANSPARENT	n.a.
0007	BLACK	19-0000
0012	WHITE	11-0104
0029	BLU NAVY	19-4023
0031	SILVER	16-3801
0037	GREY	18-0306
0059	MILITARY GREEN	18-0322
0067	SHINY BLACK	19-0000 shiny
0073	TOTAL PINK	18-2333
0079	RADICAL GREEN	14-0446
0094	SHINY WHITE	11-0104 shiny
0096	BRONZE	17-1430 metal
0097	NAUTICAL BLUE	19-4019
0098	FROSTY	14-0708
0100	STARLIGHT BLACK	n.a.
0102	PLUMMY iridescent	n.a.
0103	BEETLE iridescent	n.a.
0107	FIERY RED	18-1664
0112	BLUE LAMPO	19-4025
0158	FOG	17-4402
0243	ALUMINIUM SHINY	14-5002 metal
0244	CAPRI	17-4440
0329	METAL BROWN SHINY	n.a.
0334	GOLD METALLIC SHINY	16-0836
0446	LEMON	13-0858
0447	MANGO	15-1164
0448	GERANIUM	19-1862
0449	BLUEBERRY	19-3955
0450	CACAO	19-0912
0458	METALLIC BLACK	n.a.
0521	SHINY NEON BLAZE ORANGE	n.a.
0524	SHINY NEON ENERGY YELLOW	n.a.
0507	PURPLEGRAY iridescent	n.a.
0613	HOLOGRAPHIC iridescent	n.a.
0615	PEACOCK iridescent	n.a.
0631	PINK METALLIC SHINY	n.a.
0685	FIERY RED SHINY	18-1664 shiny
0715	FOREST	n.a.
0717	DESERT	n.a.
0727	SHINY NEON ENERGY PINK	n.a.
0788	STARLIGHT TRANSPARENT	n.a.
0932	BLUE LAMPO SHINY	19-4025 shiny
0933	OPTICAL WHITE SHINY	11-0601 shiny
0934	OPTICAL WHITE	11-0601
0937	MATT NEON BLAZE ORANGE	n.a.
1040	ROYAL GREEN	19-6050
1041	CHERRY	17-1563
1044	MATT NEON ENERGY PINK	n.a.
1045	MATT NEON ENERGY YELLOW	n.a.

## DREAM SILK

CODE	COLOUR	PANTONE REF. TP-TPX
0650	BLACK	n.a.
0651	METAL BROWN	n.a.

## DREAM CHAMELEON

CODE	COLOUR	PANTONE REF.
0333	BLUE MOON	n.a.
0387	FIRE	n.a.
0389	GOLD VIBRATION	n.a.
0758	SILVER	n.a.

## DREAM TEXTURED

CODE	COLOUR	PANTONE REF.
0442	CARBON SILVER	n.a.
0443	CARBON BLACK	n.a.
0444	GRAPHITE BLACK	n.a.
0445	GRAPHITE SILVER	n.a.
0729	BRUSHED	n.a.
0731	LEATHER	n.a.
0931	CARBON PLUMMY	n.a.

## DREAM REFLECTIVE 5541

CODE	COLOUR	PANTONE REF.
0677	BLACK	n.a.
0678	BLUE METAL	n.a.
0679	WHITE	n.a.
0684	PERFORMACE GREY	n.a.
0703	SILVER	n.a.
0801	GOLD	n.a.

## CARE | MANUTENZIONE



Please refer to the technical data sheet for more info.  
Consultare la scheda tecnica per maggiori informazioni.

## CERTIFICATIONS | CERTIFICAZIONI



Dream complies with the requirements of REACH and CPSIA and it is Oeko Tex Standard 100 certified.

*Dream è conforme alla normativa REACH e CPSIA ed è certificato Oeko Tex Standard 100.*

## NOTES | NOTE

Framis reserves the right to change the colours to comply with updates to the above mentioned standards. Production colors may vary slightly with respect to the colour card.

*Framis si riserva il diritto di apportare modifiche ai colori per adeguarsi agli aggiornamenti delle suddette normative. I colori di produzione possono differire leggermente alla presente cartella.*

## MORE DETAILS | INFORMAZIONI



# DREAM 5500 COLORS & FINISHING | DREAM 5500 COLORI & FINITURE

Possibility of custom colors | Possibilità di colori personalizzati



0002 / 0003  
TRANSPARENT  
MATT / SHINY



0934 / 0933  
OPTICAL WHITE  
MATT / SHINY



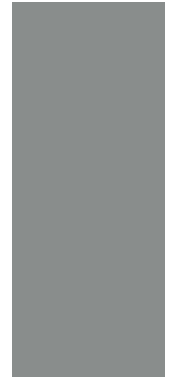
0094 / 0012  
WHITE  
SHINY / MATT



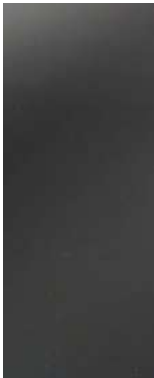
0098  
FROSTY



0031  
SILVER



0158  
FOG



0037  
GREY



0007  
BLACK



0067  
SHINY BLACK



0029  
BLUE NAVY



0112  
BLUE LAMPO



0932  
BLUE LAMPO  
SHINY



0097  
NAUTICAL BLUE



0449  
BLUEBERRY



0244  
CAPRI



0715  
FOREST



0059  
MILITARY GREEN



★ 1040  
ROYAL GREEN



0079  
RADICAL GREEN



0446  
LEMON



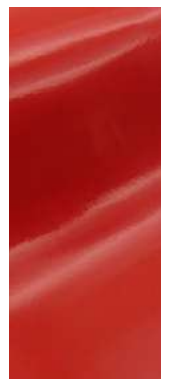
0447  
MANGO



★ 1041  
CHERRY



0107  
FIERY RED



0685  
FIERY RED  
SHINY

★ New colors | *Nuovi colori*    Removed colors | *Colori eliminati*: 0508 Purpleblue Iridescent - 0716 Camelia



0448  
GERANIUM



0073  
TOTAL PINK



0717  
DESERT



0096  
BRONZE



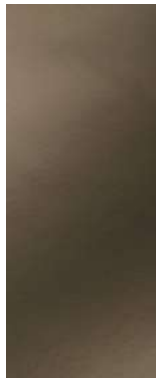
0450  
CACAO



0631  
PINK METALLIC  
SHINY



0334  
GOLD METALLIC  
SHINY



0329  
METAL BROWN  
SHINY



0243  
ALUMINIUM  
SHINY



0458  
METALLIC BLACK



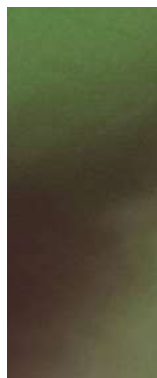
0507  
PURPLEGRAY  
IRIDESCENT



0613  
HOLOGRAPHIC  
IRIDESCENT



0615  
PEACOCK  
IRIDESCENT



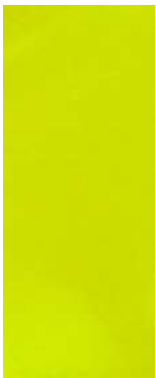
0103  
BEETLE



0102  
PLUMMY



★ 0937 / 0521  
NEON BLAZE  
ORANGE MATT /  
SHINY



★ 1045 / 0524  
NEON ENERGY  
YELLOW MATT /  
SHINY



★ 1044 / 0727  
NEON ENERGY  
PINK MATT /  
SHINY



0100 / 0788  
STARLIGHT BLACK /  
TRANSPARENT



5505  
DREAM FLAG\*

### DREAM FLAG

By choosing from the Dream colour card, you can combine up to three colours, to create your favourite flag.

\*France version available on stock service.

*Scegliendo dalla cartella colori Dream, è possibile combinare fino a tre colori, per creare la vostra bandiera preferita.*

*\*Versione Francia disponibile a magazzino.*

Width: 15 - 20 mm



## DREAM CHAMELEON

Dream Chameleon shades pick up the color of the fabric they are bonded to. **Possibility of custom colors.**

*I colori Chameleon cambiano tonalità in relazione al colore del tessuto sul quale vengono applicati.*  
**Possibilità di colori personalizzati.**

Film width: 700 mm  
Tape width: 20 - 10 mm



Fabric sample without film

These colors are applied on this black and white fabric to show the special effect of Chameleon colors.



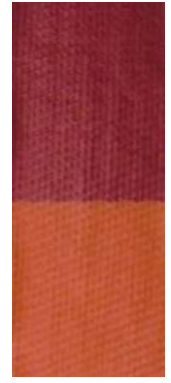
0758  
SILVER



0333  
BLUE MOON



0389  
GOLD VIBRATION



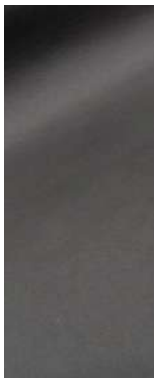
0387  
FIRE

## DREAM SILK

It is characterized by silky aspect and extremely soft touch. **Possibility of custom colors.**

*È caratterizzato da un aspetto setoso e un tocco estremamente morbido.*  
**Possibilità di colori personalizzati.**

Film width: 700 mm  
Tape width: 20 - 10 mm  
Thickness: 150 µm (6 mil)  
Weight: 150 g/m<sup>2</sup>



0650  
BLACK



0651  
METAL BROWN

## DREAM TEXTURED

3D textures. The following versions are always available on stock service.

**Possibility of custom colors.**

*Finiture 3D. Le seguenti versioni sono sempre disponibili a magazzino.*

**Possibilità di colori personalizzati.**

Film width: 700 mm  
Tape width: 20 - 10 mm  
Thickness: ~ 140/160 µm (5,5/6,6 mil)  
Weight: 150 g/m<sup>2</sup>



0444  
GRAPHITE BLACK



0445  
GRAPHITE SILVER

## DREAM REFLECTIVE 5541

It is an elastic reflective product with a soft touch and a lightweight feel. **Possibility of custom colors.**

*È un prodotto riflettente con un'ottima elasticità, pur mantenendo un tocco morbido.* **Possibilità di colori personalizzati.**

Film width: 1000 mm  
Tape width: 20 - 10 mm  
Thickness: 170 µm (7 mil)  
Weight: 235 g/m<sup>2</sup>



0703  
SILVER



0801  
GOLD



0443  
CARBON BLACK



0442  
CARBON SILVER



0931  
CARBON PLUMMY



0679  
WHITE



0678  
BLUE METAL



0684  
PERFORMANCE  
GRAY



0677  
BLACK



0731  
LEATHER



0729  
BRUSHED

**Candle power (Silver): > 450 cd/lux**

## DREAM 5500 FEATURES | DREAM 5500 CARATTERISTICHE

Dream is a versatile polyurethane one-side adhesive product, available as film and tape, with different weights and thicknesses, suitable for several areas of use.

*Dream è un prodotto monoadesivo in poliuretano, disponibile in film e nastro, con differenti grammature e spessori, estremamente versatile ed adatto a vari utilizzi.*

### Features:

- elasticity
- printability
- easy cutting
- good adhesion on textiles of various kinds
- great washability

### Applications:

- decorations
- logos
- branding
- patches
- taping
- reinforcement

### Caratteristiche:

- elastico
- stampabile
- facilità di taglio
- ottima adesione su tessuti di varie tipologie
- resistenza ai lavaggi

### Applicazioni:

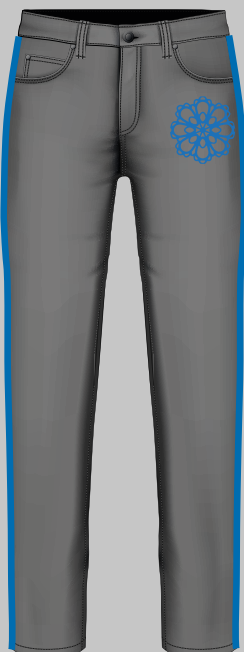
- decorazioni
- loghi
- scritte
- forme laserate
- nastrature
- rinforzi

The article Dream is available both as tape and film. The film version is supplied with PET support to facilitate die cutting, plotter cutting and laser cutting - we can provide laser cut service. The film version is also available on paper support ready for printing (only white and black matt, other colors on request) - we can provide printing service. The tape version is supplied without carrier for the machines applications.

Film width: 700 mm (27,55 inch) | Tape width: 20 - 10 mm (0,78 - 0,39 inch)

*L'articolo Dream è disponibile sia come nastro che come film. Il film presenta un supporto in poliestere che ne facilita il taglio a laser/plotter e la successiva applicazione - possiamo fornire il servizio di taglio laser. La versione in film è disponibile anche su supporto carta pronto per la stampa (solo bianco e nero opaco, altri colori su richiesta) - possiamo fornire il servizio di stampa. La versione a nastro è fornita senza supporto per le applicazioni in macchina.*

Larghezza film: 700 mm (27,55 inch) | Larghezza nastro: 20 - 10 mm (0,78 - 0,39 inch)





info@framis.it  
www.framis.it



**FRAMIS ITALIA SpA**

Via Europa 20  
20083 Vigano di Gaggiano  
Milan - Italy  
Ph. +39 02 908051  
Fax +39 02 90843055

**FRAMIS ITALIA HK Ltd**

Unit G on 7/f  
Kwai Shun Industrial Centre  
No. 51-63 Container - Port Road  
Kwai Chung - New Territories - Hong Kong  
Ph. +852 31044600  
Fax +852 31044633

**FRAMIS ITALIA USA Inc.**

West coast +1 503 805 3827  
East coast +1 908 419 5992

**FRAMISITALIA**